

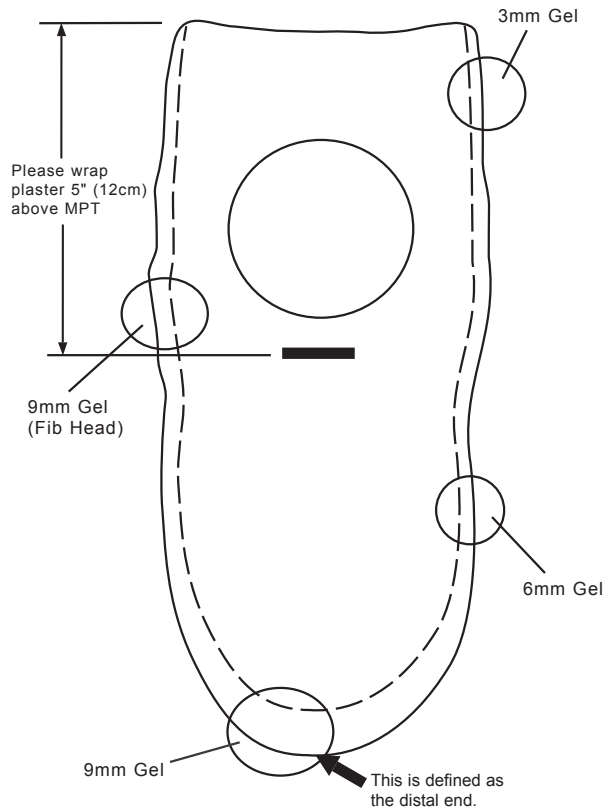
# Alpha® DESIGN BK Liners and Test Socket Order Form

## Important Casting & Marking Guidelines

This form will allow you to order an Alpha® DESIGN Liner with custom gel modifications for either a "Standard" shaped BK limb or for a "Symes" shaped BK limb. Below are diagrams that explain what the custom gel profile of each type will be. For greater control over the gel design ask Ohio Willow Wood about the OMEGA™ T-Ring™ and the Alpha® DESIGN Liner wizard.

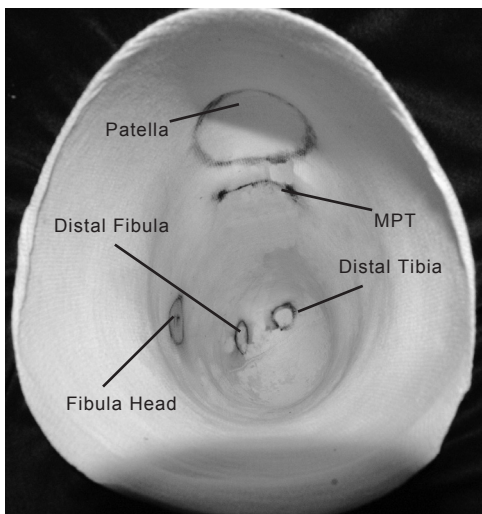
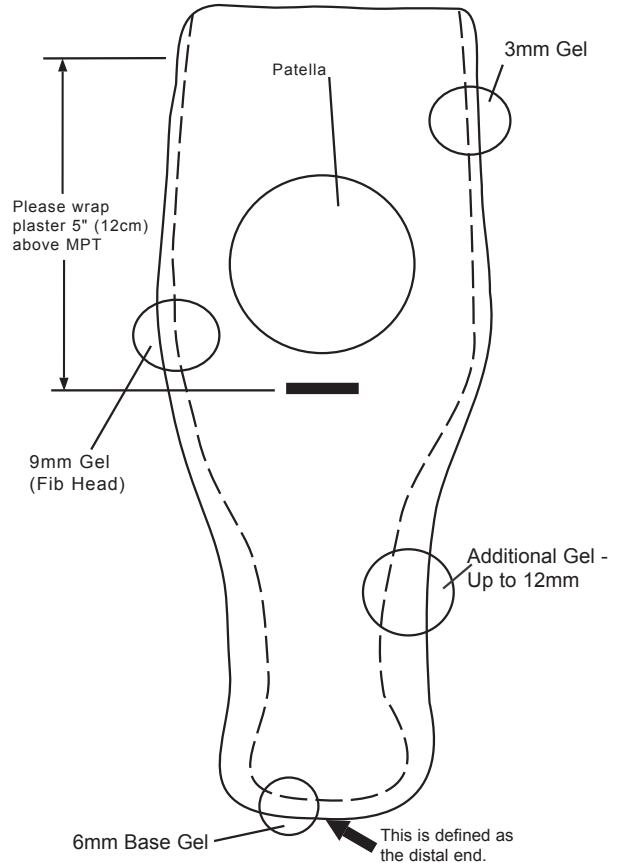
### For a BK Alpha® DESIGN liner from a cast the gel profile will be:

- \*6mm base gel thickness
- \*9mm distal gel thickness over the distal fibula and tibia
- \*3mm of gel proximally above the socket
- \*3mm posteriorly behind the patella
- \*9mm of gel over the fibula head



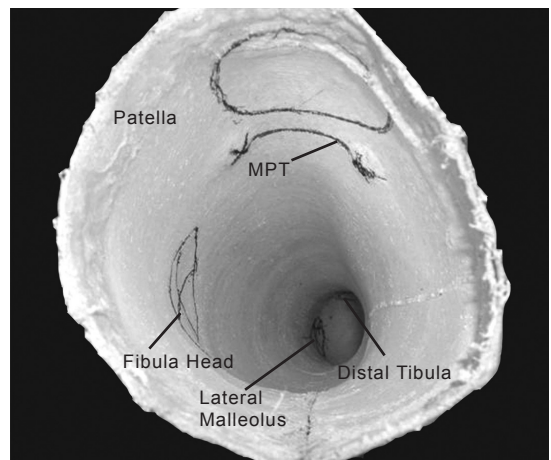
### For a Symes BK Alpha® DESIGN liner from a cast the gel profile will be:

- \*6mm base gel thickness
- \*3mm of gel proximally above the socket
- \*3mm posteriorly behind the patella
- \*Up to 12mm of gel to fill the necking area above the malleolus. This area will be filled to create a more cylindrical shaped limb.
- \*9mm of gel over fibula head



### Proximal View

See the examples for the marks that must be indicated on the cast. Missing marks may result in no additional gel at the location and may delay the order.



### Please Note:

- For bilateral amputees, please use separate forms for each residual limb for best socket/liner accuracy.
- When casting, please cast patient at least 4" to 5" above the knee.
- Please make sure to include the patient ID on the cast.